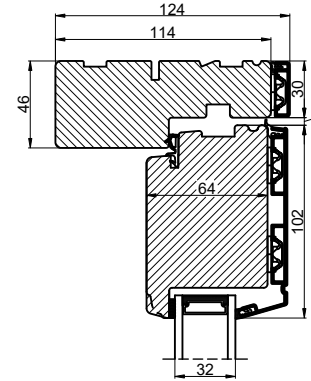
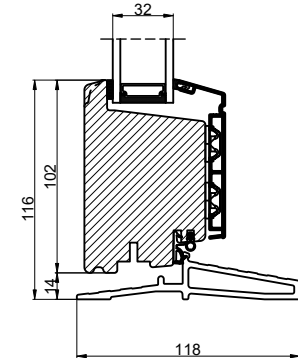
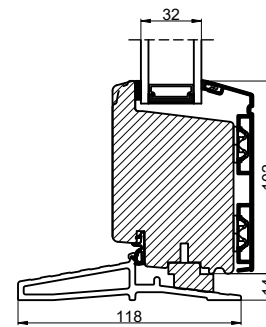
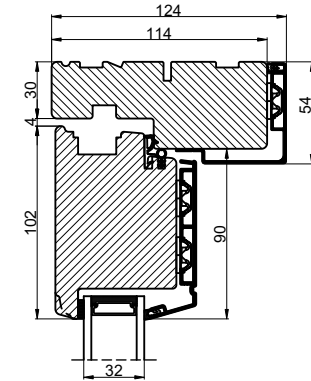


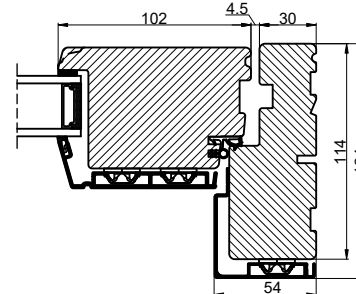
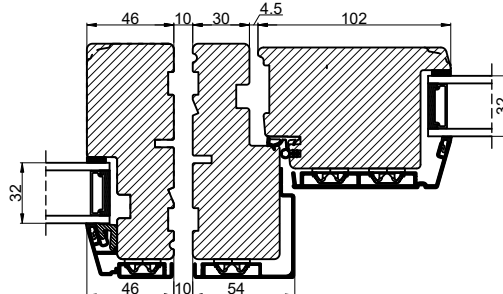
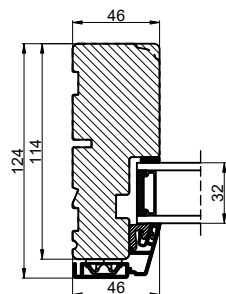
Lodret snit A




Lodret snit B



Vandret snit C



 Outline vinduer til tiden		Outline Vinduer A/S Fabriksvej 4 DK-9640 Farsø www.outline.dk
Tegn. nr.	840-09	Målestok 1:4
Int.		MINPAU
Rev. nr.		01
Rev. dato.		2022-05-26
Benævnelse: TRÆ / ALU 2-lags Inddgående dør sammenstillet med sideparti.		