

# Assembly instructions for folding doors

**Folding doors up to 4200 mm frame width:** Frame and tracks are supplied together. Sections A and B can be ignored. Go directly to Section C: Installation of folding doors.

**Folding doors over 4200 mm frame width:** Frame and tracks are supplied partially together. Begin with Section A: Assembling frame.

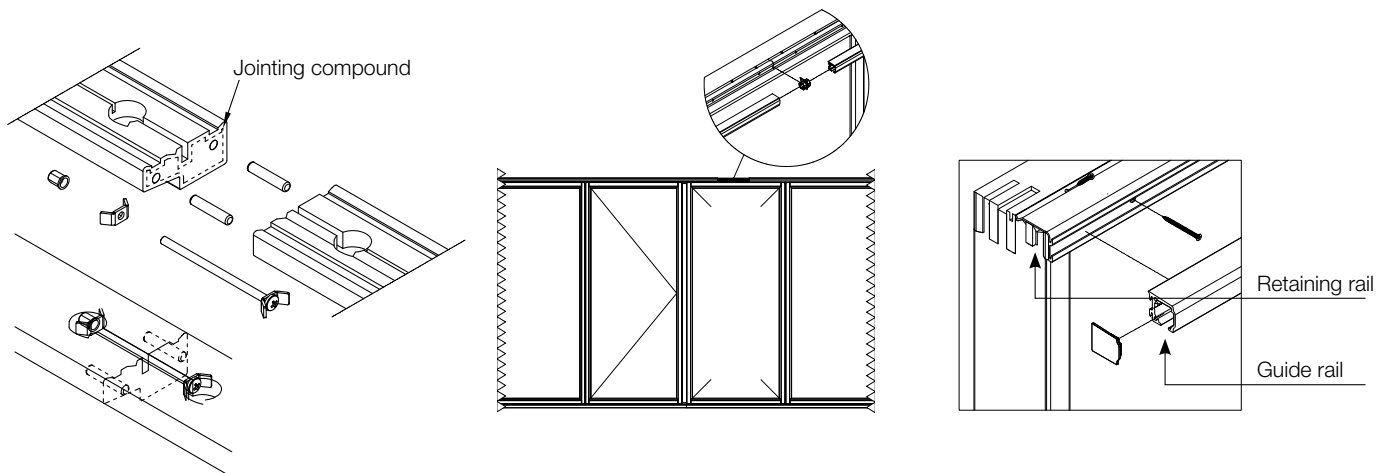
## A: Assembling frame

- Begin by adding jointing compound in the peg holes.
- Thereafter add jointing compound as a bead along the entire end profile.
- Assemble the pegs in the holes and press the frame firmly together.
- Install the fittings and tension nuts.
- Ensure that the assembled frame is fully joined. Add jointing compound if required.
- The excess jointing compound can be removed with a damp cloth.
- Color/structural difference can occur on the bottom frame, as this may be composed of two different pieces of hardwood.

**Please note:** When installing the top frame in a load-bearing construction, it is recommended that a jamb screw is used on each side of the connected frames.

## B: Assembly of retaining and guide tracks

- It is important that the assembly of the rails is over the standing door casement.
- Begin by installing the retaining rail. The retaining rail is installed using 4 x 25 mm screws in all holes.
- After installing the retaining rail, the guide rail is installed.
- Then put the wheels in the guide track – and finally fit the end plug, which locks the carrier and guide track together.



## C: Installation of folding doors

**Please note:** Folding doors are not constructed as self-bearing doors. Check therefore that there is a load bearing beam above the wall cut-out. It is extremely important that the top frame (and thereby the guide track) is installed 100% level – otherwise the wheels on the door will not function optimally.

Wear rings are delivered in boxes with various screws, studs and wheels. To be mounted on outside wheels.

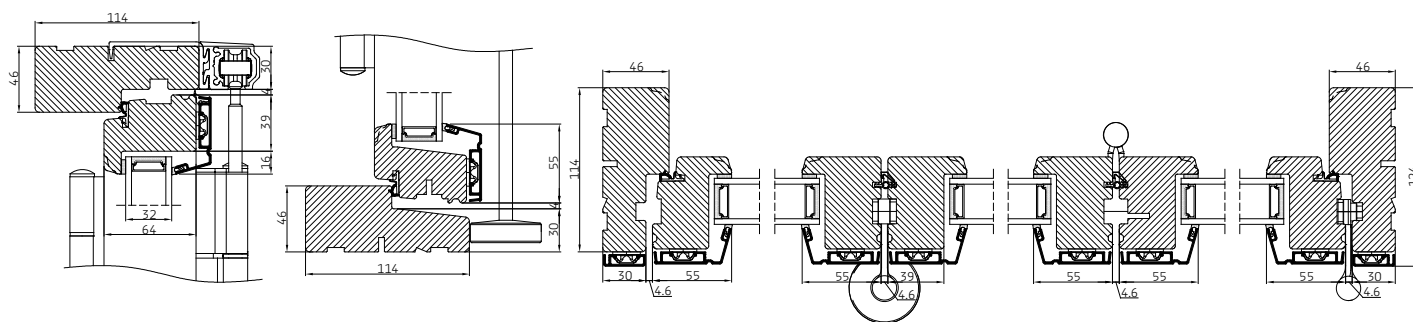
- The enclosed dabs are to prevent pinching of grips between frames and to prevent frames from scratching each other when fully opened.

- The frame is wedged (in the horizontal and level position – remember to take diagonal measures).
- Make sure there is a min. of 12 mm joint around the frame in the wall cut-out for wedging, levelling and jointing. If the wall cut-out is very uneven, 12 mm may not be sufficient for levelling. Correctly located, the frame must be attached in the rebate with jamb screws.

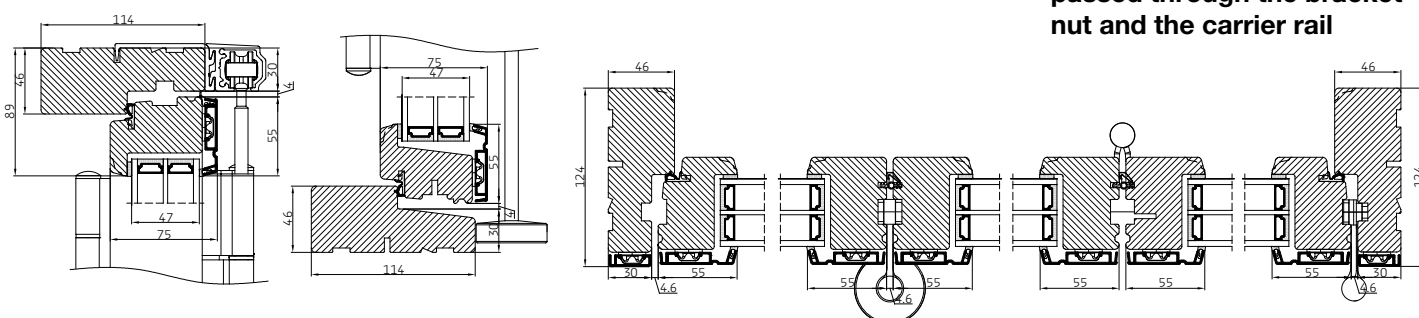
The top frame sill must be supported every 500 mm.

- The bottom frame sill must be supported every 500 cm.
- Side frames are attached in the same way as doors.
- Remember to brace at attachment points.

### WOOD/ALU 2-layers glass



### WOOD/ALU 3-layers glass



**NB: The upper arm is passed through the bracket nut and the carrier rail**

### Do not use expanding foam when installing folding doors!

- When the frame has been correctly installed, begin installing the sashes. The casements are marked with a number in the bracket groove. Frames hinged from the left start with 1, where frames hinged from the right start with the highest number, corresponding to the total number of frames in the door.
- When installing the first frame, remove the top two hinges in the frame and reinstall the hinges when installing the frame.
- When fitting the next frame, remove the next top hinges before fitting the next frame.
- The next casement is hung and the stay is pushed upwards, so that it fits into the hole in the guide track. They are screwed together at the bottom of the hinge with an Allen key 4 mm. On the lower part of the hinge there is a screw which is screwed on so that the rod cannot come loose during use. A 3 mm Allen key is used here. If the door requires subsequent adjustment in height – remember to loosen the screw.
- Depending on the door model, the process is repeated either from the current frame or from the opposite frame.

## Folding doors and stainless steel

### Maintenance and cleaning of stainless steel

Folding doors are produced with stainless steel hinge parts, and stainless steel is by nature a very tough material, but it is still susceptible to surface attack. This is seen, for example, in the form of fly ash, which are small metal particles that settle as small red specks on the surface.

In order to avoid an attack by flash rust, it is important to close the surface with a thin acid-free oil. This is done before the folding door is put into use and we recommend that the treatment is repeated a few times a year. If you live in coastal areas, the folding door is

particularly vulnerable and treatment must therefore be carried out more frequently to achieve optimum protection.

The acid-free oil must be applied with a lint-free cloth. Be careful not to overdose the amount of acid-free oil, as the protective effect is achieved by a fine, thin film.

If fly lint occurs due to lack of maintenance, it is removed using stainless steel cleaner, which is used in general household.

In addition, the folding doors are maintained as windows and doors.

## User instructions

A folding door is opened at the casement using the slightly curved handle – by operating the handle and opening the door approx. 90°. Thereafter, the flush bolts at the bottom of the side of the next section are opened, and the next handle on that side can be used. Thus the sections can be pushed to the side. Repeat until the desired opening is achieved.

Thereafter the sections without handles are opened, by opening the flush bolts at the bottom and top on the side of each section. Thereafter, If there are several sections on that side, the flush bolts on the side of the next section are opened, and the next handle on that side can be used. Thus the sections can be pushed to the side. Repeat until the desired opening is achieved.

**Maintenance:** The hardwood bottom sill can be treated with hardwood oil. Other maintenance of folding doors is the same as for general windows and doors.

**Adjustment:** The drawing shows the hinges that are adjustable – either sideways and/or up/down

**Please note:** It is recommended that there is 3-4 mm gap between the casement and frame at the top, for optimal function.

Up/down and side adjustable

It is recommended that there is 3-4 mm gap between the casement and frame at the top, for optimal function.

Indsæt tekst:  
↑ – only against hinge side.

Exterior hinges are side adjustable. Here a 3 mm Allen key is used.

Indsæt tekst:  
← – only against hinge side.

